



एच.ई.सी.

ISO 9001:2000

HEAVY MACHINE BUILDING PLANT
HEAVY ENGINEERING CORPORATION LIMITED
(A Govt. of India Enterprise)
Ranchi - 834 004 (INDIA)

Phone : 0651-2400921 , 2401349
Fax : 0651-2401166, 2401571
E-mail : ukkrishna@hecltd.com
Web : hecltd.com

Materials Management Division

LIMITED TENDER

No. HMBP/PUR/12/965387/MW - 3255

Dated: 28.04.2012

SCHEDULE OF ENQUIRY

Sl.No.	Description	Qty (Sets.)
1	Water Tank and Pump arrangement as per attached Drg.No.1522.64.001 & 1522.64.002	02

Note Please submit your quotation in two bid system i.e. **Price Bid & Techno-commercial Bid.**

Purchase / HMBP during working hours from **2.00PM to 4.00PM**

Schedule of Tender receipt by **17.05.2012 upto 1.00 PM**. Opening of Tender on **17.05.2012, at 3.00PM**
TENDERS must be submitted in sealed cover with Tender No. and the Due date superscribed on it failing which Tenders may be ignored.

Offers to be submitted in two parts.

In case of Two part bids (as mentioned above, the technical and commercial aspects to be sealed in a separate envelope superscribing Part-1 on it., The Price bid to be superscribed as Part - 2)

Special condition if any :

NOTE:

1. The rate quoted shall be inclusive of all packing & forwarding. Freight charges to be mentioned separately.
2. The Price quoted by the tenderer should be exclusive of sales tax. The rate and nature of sales tax applicable should be shown separately. Sales tax will be paid to the seller at the rate at which it is liable to be assessed or has actually been assessed on the date of supply provided the transaction of sale is legally liable to sales tax and within the delivery period. Any change on the taxes & duty structure beyond the delivery period will not be considered by HEC.
3. The rates quoted must be firm and the offers made must remain open for acceptance for three months from the date of opening of the tender.
4. Quotations erased or over written are likely to be rejected unless all corrections are authenticated with the tenderer's signature.
5. Delivery date offered must be specified and guaranteed.
6. Full payment will be made after 30 days of the receipt of supplies at destination duly inspected.

7. Full particulars i.e. specification, literature and / or drawing wherever applicable should be submitted alongwith the quotation. The brand and 'Make' name must be Indicated.
8. The Corporation does not pledge itself to accept the lowest or any tender and reserves to itself the right of accepting the whole or any part of tender or portion of the quantity offered and you shall supply the same at the rate quoted.
9. Supplies will be subject to Inspection by our Inspection wing / or inspection agencies prescribed by us.
10. Order placed as a result of this tender will be subject to the Corporation's General Terms and Conditions of contract which can be down loaded from our website (www.hecltd.com)
11. Corporation reserves the right to call for and examine at any time the books of accounts and other documents and papers of the firm for the purpose of ascertaining whether any excess payments has been made or the firm likely to be received / received undue benefit out of execution of the particular contract.
12. Earnest Money (if indicated above specifically) - Earnest money to the extent of 2% of the total value will have to be deposited by demand draft on the State Bank of India, Ranchi Hatia Branch, in favour of Heavy Engineering Corporation Ltd. Ranchi.- 4
13. Security Deposits -successful tenderers will have to deposit security equal to 5 percent of the value of the contract within the desired period. Failing this, the contract will be cancelled at the risk and expenses of the suppliers.
14. Delivery: The time for and the date of delivery of the Stores stipulated in the acceptance of tender shall be deemed to be the essence of the contract and delivery must be completed not later than the dates specified therein.
Otherwise:
 - a) The purchaser to recover from the contractor a sum of 0.5 % per week (completed week) of the price of the stores(upto maximum 10 %) as liquidated damages, which the contractor has failed to deliver as aforesaid or
 - b) The purchaser may procure the undelivered stores / similar items from elsewhere, without notice to the contractor at the risk of the contractor without canceling the contract in respect of the consignment not yet due for delivery or,
 - c) to cancel the contract or a portion thereof.
15. Income Tax Clearance Certificate - All tenderers shall submit along with their tender an Income Tax Clearance Certificate duly countersigned by the Income Tax Officer of the circle concerned under the seal of the office. Copy of Permanent Account No. (PAN) (of Income Tax) to be enclosed with the bid.
16. There is no obligation on our part to accept delayed / late tenders. Tenders received after the due date of opening are liable to be summarily rejected.
17. The rates quoted shall also be inclusive of embossing on the material. The Ownership namely HMBP / FFP / HMTP should be at a predominant place of the material to a size / thickness upon the volume of the material.

Special .Note:

While submitting tender pl. mentioned your Registration No. with HEC as a registered vendor with valid paper. If not pl. get registered your firm with HEC Limited immediately.

Signature of Purchase Executive

HEAVY ENGINEERING CORPORATION LIMITED
(A Government of India Enterprise)
HEAVY MACHINE BUILDING PLANT
MATERIALS MANAGEMENT DIVISION
P.O.DHURWA, RANCHI – 834004

Phone 0651-2400921/2401349,
Fax – 0651-2401166
E-mail : purhmbp@hecltd.com,

Ref.HMBP/PUR/

Date:

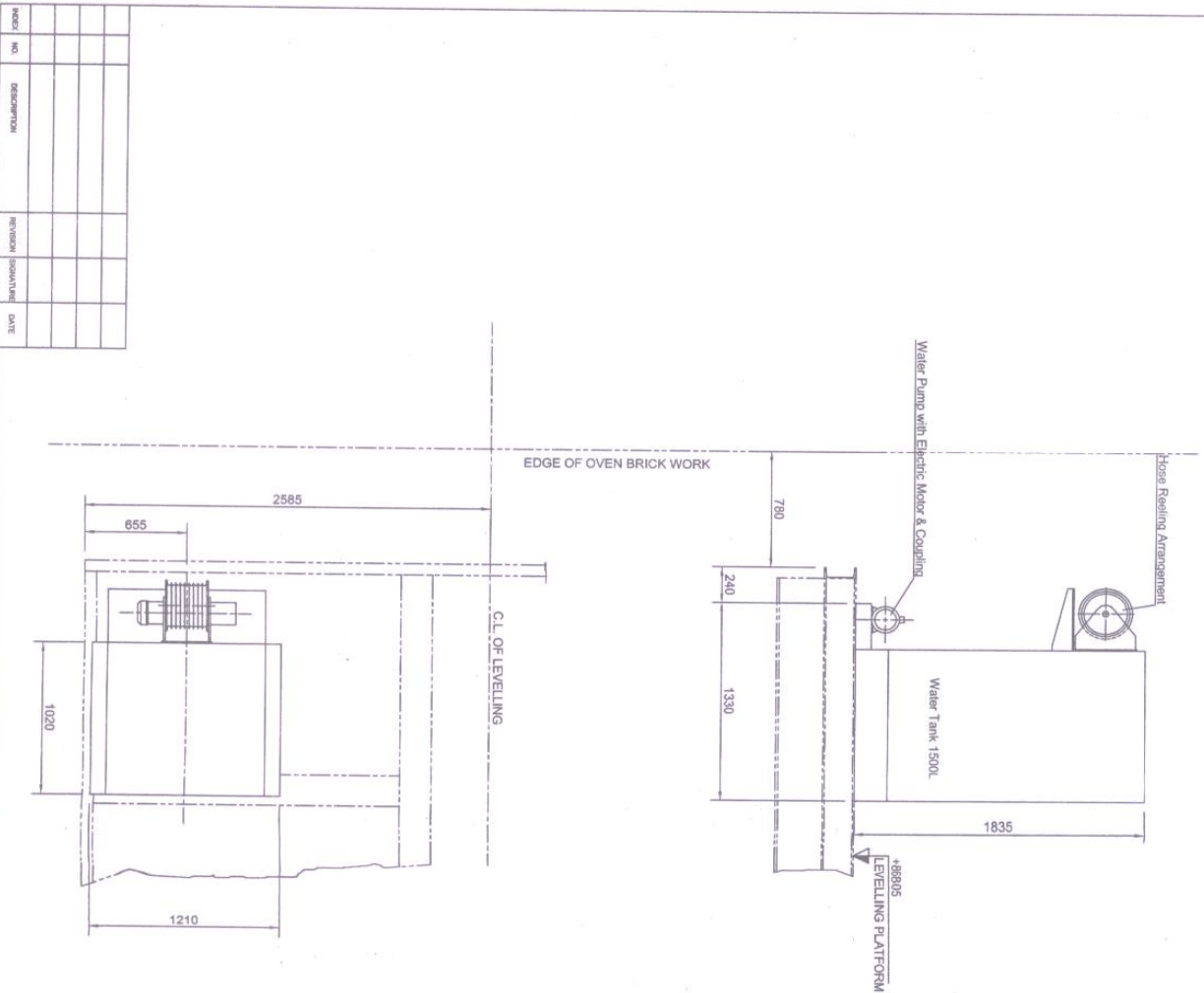
Terms & Conditions:

Sl. No.		HMBP/HEC Requirement	Bidders confirmation
1.	Price Terms (F.O.R. HMBP) Ex-Works /FOB	FOR HMBP Stores	
2.	Packing & Fwd.Charges	Free of Cost	
3a.	Central Excise Duty/Educ.CESS / S.Higher Educ.	To be quoted separately	
3b.	MODVAT Document to be provided	Document to be provided for availing MODVAT benefit	
4a.	Central Sales Tax	Separately	
4b.	Jharkhand VAT	Separately	
5.	Payment Terms	Within 60 days after receipt of material at HMBP Stores	
6.	Validity of offer	3 months.	
7.	Price variation clause	Not applicable	
8.	Delivery Schedule	Within 3 months from the GA Drawing approval	
9.	CENVAT document to be provided	a) Document to be provided. b) CENVAT included in quoted rate (in % of quoted rate)	
10.	Inspection	By QCA/HMBP at your works.	
11.	Insurance charges if any	To be quoted separately	
12.	Freight charges if Ex-Works	To be quoted separately	
13.	PBG	10% of Contract value to be provided before release of payment.	
14.	Test Certificate and Guarantee Certificate	To be provided by manufacturer	
15.	G.A. Drawing	To be approved after receipt of order and before start of manufacturing.	
16.	Guarantee / Warranty	12 months from the date of commissioning	

Note :

Attached terms & conditions format must be filled in by bidders and enclosed along with Technical Bid of offer (Part – I) otherwise your offer may not be evaluated.

1522.64.001



Technical Specifications

1. Water Pump
Discharge Rate - 35 Ltr / Min
Discharge Pressure - 1 Bar
Suitable TEFCE Electric Motor & Coupling
2. Stainless Steel Nozzle for Water Admission
Air Discharge - 71 Ltr / Min at 2.1 Bar
Water Discharge - 30 Ltr / Min at 3 Bar
3. Suitable Hose for Water Discharge connected from Pump to Nozzle, 5 meter long
4. Water Tank (1500 Ltr) Capacity as per fig. no. 1522.64.002

Water Tank & Pump Arrangement		1522.64.001	
HEAD OFFICER	ASST. ENGINEER	SCALE	1:80
DRAWING	IN CHARGE	DATE	Feb. 11
DESIGNER	IN CHARGE	HEC LTD, RANCHI	Rev - A
DRAWN BY	IN CHARGE		

Technical drawing of a mechanical assembly, likely a pump or valve component, showing a cross-section. The drawing includes dimensions and labels:

- Dimensions:**
 - 60 (horizontal distance from the left edge to the center of the vertical section)
 - 5 (width of the top horizontal section)
 - 5 (width of the bottom horizontal section)
 - 15 (width of the central vertical section)
 - 83 (total horizontal length)
 - 20 (width of the bottom horizontal section)
 - 5 (width of the bottom horizontal section)
 - 5 (width of the bottom horizontal section)
- Labels:**
 - 3 (top right corner)
 - 2 (top left corner)
 - 1 (bottom left corner)
 - 4 (bottom right corner)
 - 5 (bottom center)
 - 6 (bottom center)
 - 7 (bottom center)
 - 8 (bottom center)
 - 9 (bottom center)
 - 10 (bottom center)
 - 11 (bottom center)
 - 12 (bottom center)
 - 13 (bottom center)
 - 14 (bottom center)
 - 15 (bottom center)
 - 16 (bottom center)
 - 17 (bottom center)
 - 18 (bottom center)
 - 19 (bottom center)
 - 20 (bottom center)
 - 21 (bottom center)
 - 22 (bottom center)
 - 23 (bottom center)
 - 24 (bottom center)
 - 25 (bottom center)
 - 26 (bottom center)
 - 27 (bottom center)
 - 28 (bottom center)
 - 29 (bottom center)
 - 30 (bottom center)
 - 31 (bottom center)
 - 32 (bottom center)
 - 33 (bottom center)
 - 34 (bottom center)
 - 35 (bottom center)
 - 36 (bottom center)
 - 37 (bottom center)
 - 38 (bottom center)
 - 39 (bottom center)
 - 40 (bottom center)
 - 41 (bottom center)
 - 42 (bottom center)
 - 43 (bottom center)
 - 44 (bottom center)
 - 45 (bottom center)
 - 46 (bottom center)
 - 47 (bottom center)
 - 48 (bottom center)
 - 49 (bottom center)
 - 50 (bottom center)
 - 51 (bottom center)
 - 52 (bottom center)
 - 53 (bottom center)
 - 54 (bottom center)
 - 55 (bottom center)
 - 56 (bottom center)
 - 57 (bottom center)
 - 58 (bottom center)
 - 59 (bottom center)
 - 60 (bottom center)
 - 61 (bottom center)
 - 62 (bottom center)
 - 63 (bottom center)
 - 64 (bottom center)
 - 65 (bottom center)
 - 66 (bottom center)
 - 67 (bottom center)
 - 68 (bottom center)
 - 69 (bottom center)
 - 70 (bottom center)
 - 71 (bottom center)
 - 72 (bottom center)
 - 73 (bottom center)
 - 74 (bottom center)
 - 75 (bottom center)
 - 76 (bottom center)
 - 77 (bottom center)
 - 78 (bottom center)
 - 79 (bottom center)
 - 80 (bottom center)
 - 81 (bottom center)
 - 82 (bottom center)
 - 83 (bottom center)
 - 84 (bottom center)
 - 85 (bottom center)
 - 86 (bottom center)
 - 87 (bottom center)
 - 88 (bottom center)
 - 89 (bottom center)
 - 90 (bottom center)
 - 91 (bottom center)
 - 92 (bottom center)
 - 93 (bottom center)
 - 94 (bottom center)
 - 95 (bottom center)
 - 96 (bottom center)
 - 97 (bottom center)
 - 98 (bottom center)
 - 99 (bottom center)
 - 100 (bottom center)