



एच॰ई॰सी॰

ISO 9001:2000

**HEAVY MACHINE BUILDING PLANT
HEAVY ENGINEERING CORPORATION LIMITED**(A Govt. of India Enterprise)
Ranchi – 834 004 (INDIA)

Tender Enquiry No. PUR/HMBP/2018/322438/EL-5461

18.09.2018

OPEN TENDER**Sub: E-tendering with E-price bids for Supply of Different types of current collector**

Tenders are invited on line through website. Tenders are to be submitted strictly as per guidelines furnished in the website of <http://etenders.gov.in> hereunder:

INSTRUCTION TO BIDDERS (ITB)**1.0 Tender Summary :**

Tender Ref No.	Enquiry No. PUR/HMBP/2018/322438/EL-5461 dated 18.09.2018	
Cost of Tender documents / Tender Fee	Rs.200.00 in favor of "Heavy Engineering Corporation Limited "Payable at Ranchi.(To be submitted in form of DD" to the undersigned through courier/By Hand)	
Earnest Money Deposit	Rs.5,000.00 in favor of "Heavy Engineering Corporation Limited "Payable at Ranchi.(To be submitted in form of DD" to the undersigned through courier/By Hand)	
Mode of Tender:	E tender with e price bid	
Type of tender	Two Bid tender	
Last date and time for on-line submission of tender	09.10.2018	UPTO 13 Hrs (IST)
Due date and time for on line opening of tender Part 1 only:	11.10.2018	AT 15 Hrs (IST)
Due date and time for online opening of Price bid of technically suitable firms	Will be intimated through e tender portal	
(Under unforeseen circumstances and if the due date falls on holiday, the tender will be opened on the next full working day at same time		

Bidders are requested to submit their most competitive offer through e- procurement mode only. Offer submitted through offline mode will not be considered. For more information please visit our website <https://etenders.gov.in/eprocure/app>.

Prospective Tenderers are advised to get registered themselves only on at NIC tender portal i.e. <https://etenders.gov.in/eprocure/app>, obtain 'User ID' & 'Password' and go through the



एच॰ई॰सी॰

ISO 9001:2000

**HEAVY MACHINE BUILDING PLANT
HEAVY ENGINEERING CORPORATION LIMITED**

(A Govt. of India Enterprise)
Ranchi – 834 004 (INDIA)

'Self Help files' available in the Home Page after log in to the portal <http://etenders.gov.in>. They should also obtain Class III Digital Signature Certificate (DSC) in parallel which is essentially required for submission of their application. Detailed instructions for online bid submission is mentioned below. No registration fee would be charged from the bidders.

Bidders are required to upload the bid along with all supporting documents including priced part (BoQ) only on the e-tendering website (<https://etenders.gov.in/eprocure/app>), on or before the due date and time for submission of bid.

NOTE:

1. HEC reserves the right to extend / change the schedule of any activity by intimating the bidders through a notification on the e-tender portal.
2. For detailed guidance for online bid submission, please refer annexure-D.

2.0 Contents of tender documents:

1	Techno-Commercial Terms and Conditions of NIT	Annexure "A" & Annexure 'B'
2	Template for Price Bid/BOQ format for online submission by the bidder	BOQ.xls

Requirements for Vendors:

- A) P.C. connected with internet.
- B) Registration with Service provider portal <https://etenders.gov.in>
- C) The vendor should possess a Class-II or Class III Digital Signature certificate (Mandatory). (Bids will not be recorded without Digital Signature Certificate.)
- D) In case of any clarification please contact M/s NIC, before the schedule time of the submission of bid. Contact Person:- **Shri Kushal Kumar: 09852923855 / 7903884318**
- E) Registration / Enrollment of Bidder on e- tender Portal of HEC: In order to submit the bid, the bidders have to get themselves registered online on the e- tender portal of HEC Ltd with valid Digital Signature Certificate (DSC) issued from any agency authorized by CCA and which can be traced upto the chain of trust to the Root Certificate of CCA. The online Registration of the Bidders on the portal will be free of cost and one time activity only. The registration should be in the name of the bidder, whereas DSC holder may be either bidder himself or his duly authorized person.

3.0 For **registration**, Submission procedure and method of correspondence etc. Please visit our website: <https://www.hecltd.com> / <https://etenders.gov.in> and click on the relevant link for help.

4.0 Help for participating in e-tender:

The detailed method for participating in the e-procurement are available in the website <https://www.hecltd.com> or <https://etenders.gov.in> The bidders have to Log on to official website and then click on the specified links to start participating in the e-procurement process.



एच॰ई॰सी॰

ISO 9001:2000

**HEAVY MACHINE BUILDING PLANT
HEAVY ENGINEERING CORPORATION LIMITED**

(A Govt. of India Enterprise)
Ranchi – 834 004 (INDIA)

Bidders are also free to communicate with the contact person of the service provider to get all clarifications regarding the mode of the e-procurement process.

NB: (I)

- (I) Please note that there is no provision to take out the list of parties downloading the tender document from the above referred web site. As such, tenderers are requested to see the website once again before due date of tender opening to ensure that they have not missed any corrigendum uploaded against the said tender after downloading the tender document. The responsibility of downloading the related corrigenda, if any, will be that of the downloading parties.
- (II) No separate intimation in respect of corrigendum to this NIT (if any) will be sent to tenderers who have downloaded the documents from website. Please see website i.e., <http://www.hecltd.com> or <http://www.etenders.gov.in>

5.0 The offer should be submitted (uploaded) strictly as per the terms and conditions and Procedures laid down in the website <https://etenders.nic.in> tender document failing which the offer is liable for rejection.

Bidders should download the complete NIT including the Annexure and read carefully before filling the details and uploading the documents.

6.0 The offers with any deviations to the NIT Terms and conditions shall be liable for rejection.

7.0 The bidder must upload all the documents required as per the terms of NIT. (Any other document uploaded which is not required as per the terms of the NIT shall not be considered.)

8.0 It may please be noted that E-tendering or e-procurement fall under the purview of the Information Technology Act 2000 and Information Technology (Amendment) Act 2008 and other relevant acts and subsequent amendments if any).

9.0 There will be no physical sale of the tender documents.

10.0 PREPARATION OF TENDER DOCUMENTS :

Tender is to be submitted in two bid system in the following manner and shall be submitted through electronic mode only:

a. Techno-commercial bid (Part 1) – The offer is to be scanned and uploaded in our portal consisting technical details

The commercial terms and conditions (as per annexure A & B). The format as per Annexure-B (Commercial check list sheet.pdf) shall be downloaded and the same file duly filled by the bidder is to be uploaded while submitting the offer.. No price part is to be uploaded in this part

b. Part -II – Price-Bid/BOQ: This part of the offer should contain price portion .The format of Price Bid/BOQ which in excel format shall be downloaded by the bidder and rate offered by the bidder shall be filled in the excel file and uploaded the same excel file of e tendering system while submitting the offer.

The price bid/BOQ which is incomplete and not submitted as per the instructions given will be liable for rejection.



एच॰ई॰सी॰

ISO 9001:2000

**HEAVY MACHINE BUILDING PLANT
HEAVY ENGINEERING CORPORATION LIMITED**

(A Govt. of India Enterprise)
Ranchi – 834 004 (INDIA)

Note :

Bidders are requested to upload all the attachments /documents in one single PDF File in Other Important Documents (OID) or as indicated in the online instructions. For Example if more than one document is to be uploaded in support of Eligibility criteria or proven-ness criteria or any other requirement then bidder must prepare one single PDF file of all the related documents and then upload in the system in OID

Bid Opening Process is as below:-

Cover-I: Technical bid opening date will be as per given dates. If any clarification is needed from the bidder about the deficiency in his uploaded documents in Cover-I, he will be asked to provide it through Short fall documents folder in e-tendering portal. The bidder shall upload the requisite clarification / documents within time specified by HEC, failing which tender will be liable for rejection.

Cover-II: The financial bids of the contractors / firms found to be meeting the qualifying requirements and technical criteria shall be intimated through portal. (Depending on Cover-I evaluation any changes in the date shall be intimated through e-tendering portal).

11.0 Please read carefully before you quote: -

Last date of Receipt of Tender Document : by 1:00 PM (IST) on 09/10/2018

Due date of tender opening (Part 1 only) : at 3:00 PM (IST) on 11/10/2018

1. Items to be supplied as per the provided specifications.
 2. It should be quoted on **FOR HMBP Store**.
 3. **Validity** – Minimum 120 days from the date of offer.
 4. Order will be under L.D. clause.
 5. Price Bid:-Price bid to be uploaded as per BOQ of NIT.
 6. Commercial Terms and condition in Annexure-B to be submitted/uploaded along with Technical (part 1) bid
 7. The Tender Cost (Demand Draft) needs to be sent to office of purchaser before in advance so that it reaches before scheduled date of opening of tender.
- 12.0 Disclaimer clause:-**The Company (Heavy Engineering Corporation Ltd.) nor the service provider (www.etenders.gov.in) is responsible for any failure of submission of bids due to failure of internet or other connectivity problems or reasons thereof.



एच॰ई॰सी॰

ISO 9001:2000

**HEAVY MACHINE BUILDING PLANT
HEAVY ENGINEERING CORPORATION LIMITED**(A Govt. of India Enterprise)
Ranchi – 834 004 (INDIA)**Annexure A****1.0 SCOPE OF SUPPLY: -**

Sl.No.	Material Code	Description	Qty. in No's
1.	4440063600	Complete set of indoor gravity type curb current collector.300-500A as per Drg.HMB/PED/DB/Misc-872.	100
2.	6411100350	Brass current collector as per drawing HMB/PED/DB/Misc-245.	200
3.	4440073600	Complete set of indoor gravity type curb current collector.300-500A as per Drg.HMB/PED/DB/Misc-873.	100
4.	4440083600	Complete set of indoor gravity type Main current collector 300A-500A, 500V Shoe Drg no - HMB/PED/DB/Misc-869, Assly Drg-44.00.0230.	100
5.	4440083160	Indoor Gravity Type main current collector Assembly(without shoe) Drg no-44.00.0230	100

Note: All drawings are enclosed in the last of NIT.

Commercial terms and conditions:

1. Offers to be submitted on FOR HMBP Stores basis. The rate quoted shall be inclusive of all packing & forwarding, freight and transit insurance charges.
2. The Price quoted by the tenderer should be exclusive of GST. The rate and nature of GST applicable should be shown separately GST will be paid to the seller at the rate at which it is liable to be assessed or has actually been assessed on the date of supply provided the transaction of sale is legally liable to GST and within the delivery period.
3. The rates quoted must be firm and the offers made must remain open for acceptance for three months from the date of opening of the tender.
4. **Payment terms shall be as under: 100% payment along with 100% GST shall be made through RTGS within 60 days of the receipt and acceptance of supplies at the destination**, along with Guarantee certificate, Test certificate, inspection certificate /CRV (To be issued by HEC), original invoice, Performance bank guarantee of 10% order value to be valid till full guarantee period from any nationalized bank only in HEC's Format.".

Note:

- a. For payment all the processing charges by the bank shall be on account of the firm.
 - b. If you offer any other payment terms other than NIT payment terms then your offer can be loaded with bank interest rate (Presently 1% per month i.e 12% per annum (Maximum) as per the rules of the company for L1 consideration only
5. Quotations erased or over written are likely to be rejected unless all corrections are authenticated with the tenderer's signature.
 6. Delivery –Within30 days from the date of PO Placement.



एच॰ई॰सी॰

ISO 9001:2000

**HEAVY MACHINE BUILDING PLANT
HEAVY ENGINEERING CORPORATION LIMITED**

(A Govt. of India Enterprise)
Ranchi – 834 004 (INDIA)

7. Full particulars i.e. specification, literature and / or drawing wherever applicable has to be submitted along with the quotation. The '**Brand**' and '**Make**' name must be indicated.
8. The Corporation does not pledge itself to accept the lowest or any tender and reserves to itself the right of accepting the whole or any part of tender or portion of the quantity offered and you shall supply the same at the rate quoted.
9. Supplies will be subject to Inspection by our Inspection wing / or inspection Agencies prescribed by us.
10. Order placed as a result of this tender will be subject to the Corporation's General Terms and Conditions of contract which can be down loaded from our website (www.hecltd.com).
11. Corporation reserves the right to call for and examine at any time the books of accounts and other documents and papers of the firm for the purpose of ascertaining whether any excess payments has been made or the firm likely to be received / received undue benefit out of execution of the particular contract.
12. The final quantity may vary at the time of finalization of tender; however the proper clarification / confirmation shall be taken from the firms.
13. Delivery: The time for and the date of delivery of the Stores stipulated in the acceptance of tender shall be deemed to be the essence of the contract and delivery must be completed not later than the dates specified therein. Otherwise:
 - a) **LD Clause** - The purchaser to recover from the contractor a sum of 0.5 % per week (completed week) of the price of the stores(upto maximum 10 %) as liquidated damages, which the contractor has failed to deliver as aforesaid or,
 - b) The purchaser may procure the undelivered stores / similar items from elsewhere, without notice to the contractor at the risk of the contractor without canceling the contract in respect of the consignment not yet due for delivery or,
 - c) To cancel the contract or a portion thereof.
14. **Tender Cost of Rs.200.00-** Bids must be accompanied by a Tender cost (Bid Security) amounting to Rs.200/- in the form of demand draft in favour of "Heavy Engineering Corporation Limited" and payable at par at Ranchi alongwith Part-I of the tender i.e. with techno-commercial bid. (Scan copy of DD to be uploaded along with techno-commercial bid & original DD to be sent through courier / submitted by hand to the office of undersigned.
15. **Earnest Money Deposit** - Earnest money Rs. 5,000.00 will have to be deposited in form of demand draft / bank guarantee from any nationalized bank Payable on the State Bank of India, Ranchi Hatia Branch, in favor of Heavy Engineering Corporation Ltd. Ranchi. - 4. . (Scan copy of DD to be uploaded along with techno-commercial bid & original DD to be sent through courier / submitted by hand undersigned.

Note: No EMD / Tender Document Cost shall be required under the following cases, if the firm is registered with:

 - a) **National Small Industries Corporation / Small Scale Industries / Micro, Small-scale Enterprises (MSE), as per Government directive ***.
 - b) **Firms registered with DGS&D for only those items if they are under this tender.**
16. **Security Deposit-** 5% of the P.O. value to be deposited by the successful bidder within 21 days after placement of order by HEC which shall remain with HEC till the completion of order by the firm. This clause is mandatory and has to be accepted by all bidders. . If Security deposit clause is not accepted then the offer of the bidder shall not be considered.



एच॰ई॰सी॰

ISO 9001:2000

**HEAVY MACHINE BUILDING PLANT
HEAVY ENGINEERING CORPORATION LIMITED**

(A Govt. of India Enterprise)
Ranchi – 834 004 (INDIA)

17. Tenderers registered with National Small Industries Corporation/ Small Scale Industries/ Micro, Small scale Industry (MSE) or DGS&D for the tendered item will be exempted from submission of EMD. The tenderer should enclose an authenticated copy / notarized copy of their valid registration certificate with NSIC, DGS&D for grant of exemption.

In case Bidder is covered under MSME criteria, it is mandatory to quote UAM no in Bid Documents.

HEC is registered on TReDS governed by RBI Guidelines and our registration no is HE0000320. All MSME firms are advised to be registered on RXIL (Receivable exchange of India-Mumbai)

18. **Performance bank guarantee (BG format annexure C)** – The successful bidder has to submit the performance bank guarantee of 10% of order value valid till guarantee period after supply of the material (in case order placed on the firm)
19. **Guarantee** – The stores supplied shall be guaranteed for a period of 12 months from commissioning or 18 months from date of supply whichever is earlier.
20. Based on HEC's requirement and in order to ensure security of supply from more than one sources, the total tendered quantity of any item may be split amongst more than one successful bidders at L1 Landed price. Hence Purchase Order may be placed on more than one firms and the repeat order for 100% quantity may be placed on successful bidder.
21. **Risk Purchase Clause** – If the material is not supplied within the stipulated period then material can be procured at the risk & cost of the firm without giving any notice to the firm.
22. There is no obligation on our part to accept delayed / late tenders. Tenders received after the due date of opening are liable to be summarily rejected.
23. **General conditions of the contract** :Unless otherwise specified in the Terms & Conditions above, this order shall be governed by General conditions of contract of purchase of HEC Ltd, which is available in the web site of HEC. (www.hecltd.com)

Special .Note:

While submitting tender pl. mention your Registration No. with HEC as a registered vendor with valid paper.

If not pl. get registered your firm with HEC Limited immediately.

Please indicate whether your firm covered under MSES/MSES owned SC/ST or covered under SSI separately in Techno-commercial bid.

Please submit the form of Terms & Conditions duly filled in and signed by the tenderer along with your offer in technical (part-1) bid..



एच॰ई॰सी॰

ISO 9001:2000

**HEAVY MACHINE BUILDING PLANT
HEAVY ENGINEERING CORPORATION LIMITED**

(A Govt. of India Enterprise)
Ranchi – 834 004 (INDIA)

Annexure B

(To be filled by bidder and scan copy of the same to be uploaded along with Techno-commercial bid)

Sl No.	Terms & Conditions	Desired BY HEC	Bidders Comment (Accepted / Not accepted)	Remarks
1	All Items of NIT to be quoted by bidder	To be accepted		
2	Price Term (Ex-Works / FOR HMBP	FOR HMBP Stores		
3	Packing and Fwd. (Extra/Included/Not Applicable)	To be included in quoted price. If not included then clearly indicate amount.		
4	GST Registration certificate	To be furnished		
5	TAXES (GST)	% of Applicable Taxes to be indicated Extra		
6	Payment Terms	To be confirm in line with NIT Clause No.4 of annexure-A		
7	Validity of Offer	Minimum 120 days from the date of offer of the firm.		
8	Price Variation Clause	Not Allowed (To be confirmed)		
09	Delivery Schedule	Within 30 days from the date of PO.		
10	Inspection	By QCA/HMBP		
11	Freight Charges if Ex-Works	To be quoted separately		
12	Tender Cost of Rs.200.00 (Mandatory)	DD from any nationalized bank in favor of HEAVY ENGINEERING CORPORATION LIMITED, payable at Ranchi (Exempted for NSIC/SSI registered firms)		
13	EMD of Rs. 5,000.00 (Mandatory)	DD from any nationalized bank in favor of HEAVYENGINEERING CORPORATION LIMITED, payable at Ranchi (Exempted for NSIC/SSI registered firms)		
14	Security Deposit for 5% of PO value	To be deposited by successful bidder within 21 days after placement of order by HEC. This clause is mandatory and has to be accepted by all bidders. . If Security deposit clause is not accepted then the offer of the bidder shall not be considered.		



एच.ई.सी.

ISO 9001:2000

**HEAVY MACHINE BUILDING PLANT
HEAVY ENGINEERING CORPORATION LIMITED**

(A Govt. of India Enterprise)

Ranchi – 834 004 (INDIA)

15	Performance bank guarantee for 10% of order value	BG for performance from any nationalized bank in favor of HEAVY ENGINEERING CORPORATION LIMITED, Ranchi as per tender enquiry. This clause is mandatory and has to be accepted by all bidders. If PBG clause is not accepted then the offer of the bidder shall not be considered.		
16	Guarantee/Warranty Certificate	To be provided (12 months from the date of installation & commissioning & final acceptance of customer or 18 months from the date of receipt & acceptance of materials at consignee's end whichever is earlier)		
17	L/D Clause Acceptable (Yes/No)	To be Accepted (As per NIT)		
18	Special terms (If Any)			
19	Acceptance of Risk Purchase Clause (Yes/No)	To be Accepted as per NIT		
20	GCC of HEC (available in tender section at HEC website : www.hecltd.com)	To be accepted as per NIT		
21	Confirmation of Supplying the materials as per Enquiry Schedule	YES/ NO		
22	All NIT conditions are acceptable	Yes/No, if no then state the clause wise deviation		
23	If firm is owned by SC/ST Entrepreneurs	To be indicated		
24	UAM (Udyog Aadhar No) No if registered under MSME	To be mentioned by bidder if applicable		
25	Materials shall be manufactured & supplied in line with in adherence of QMS/EMS/OHSAS	To be confirmed		



एच॰ई॰सी॰

ISO 9001:2000

**HEAVY MACHINE BUILDING PLANT
HEAVY ENGINEERING CORPORATION LIMITED**

(A Govt. of India Enterprise)
Ranchi – 834 004 (INDIA)

NOTE:

1. Please indicate whether your firm is covered under MSEs/MSEs owned SC/ST or covered under SSI separately in Tech. Bid.
2. Terms & Conditions duly filled in and to be submitted along with Techno-commercial Bid of offer otherwise your offer may not be evaluated.

(P K SINGH)
Sr.DGM./Purchase
Heavy Machine Building Plant
Heavy Engineering Corporation Limited
Dhurwa, Ranchi – 834004
Jharkhand (India),



एच.ई.सी.

ISO 9001:2000

**HEAVY MACHINE BUILDING PLANT
HEAVY ENGINEERING CORPORATION LIMITED**

(A Govt. of India Enterprise)
Ranchi – 834 004 (INDIA)

Annexure—C

FORMAT OF PERFORMANCE BANK GURANTEE

(TO BE STAMPED IN ACCORDANCE WITH STAMP ACT & TO BE ISSUED BY ANY NATIONALISED /SCHEDULED BANK AUTHORISED BY RBI TO ISSUE A BANK GUARANTEE)

Name of Equipment: ----- Guarantee NO-----

Purchase Order No.:----- dated: ----- Date: -----

Validity -----

Claim period-----

To:

M/s Heavy Engineering Corporation Ltd.
Heavy Machine Building Plant
Ranchi-834004 Jharkhand

In consideration of your having placed an order bearing Purchase Order No.-----dated:----- with-----

------(hereinafter referred to as Supplier) for the supply of-----

----- (hereinafter referred to as the-----

We ----- do hereby agree with you irrevocably that, should the machinery and equipment fail to give the guarantee performance and achieve the efficiency as stipulated in the Purchase Order within the period of guarantee or should the material and/or workmanship of the machinery and equipment supplied or any part thereof be found defective and/or fully, as per the purchase order, we undertake to pay without any demur merely on demand a sum of Rs. ----- being 20% of the value of Rs. -----for the supply of -----

Your decision whether the supplier have made any such defaults and the amount to which you are entitled by reasons thereof shall be conclusive and bind on us, subject to maximum of Rs. ----- as aforesaid.

We-----further guarantee that the machinery and equipment manufactured and supplied by the supplier shall be new, of good quality materials and of the first class workmanship as specified in the Purchase order and should the machinery and equipment supplied or any part thereof be found defective and that should the defect as pointed out in inspection note be not made good and/or in case of failure within guarantee period same shall be replaced on free of cost or repaired on free of cost to the entire satisfaction of Heavy Engineering Corporation Ltd.

We -----agree that the guarantee herein contained shall remain in full force and effect till the machinery and equipment give the desired performance and it shall continue to be enforceable till your



एच॰ई॰सी॰

ISO 9001:2000

**HEAVY MACHINE BUILDING PLANT
HEAVY ENGINEERING CORPORATION LIMITED**

(A Govt. of India Enterprise)
Ranchi – 834 004 (INDIA)

dues have been fully paid and claims satisfied or discharged subject to a period not later than----- . In the event of any extension granted for commissioning/dispatch suitable extension shall be given on your request.

We-----, further agree that any neglect, omission or forbearance or indulgence in enforcing any claim as per the terms and conditions of your purchase order or performance guarantee or any of them or any extension of the time granted for the performance or payment of penalty under the guarantee or any dispute between the supplier and yourselves as regard performance of machinery and equipment supplied or issued related to your Purchase order, shall not effect in any way our liability under this guarantee until the full payment, but in any case, shall not extend beyond-----.

This guarantee is in addition and not substitution for guarantee given to you by the seller or by their bankers on their behalf.

We----- lastly undertake not to revoke this bank guarantee during its currency except with the previous consent of the corporation in writing.

Notwithstanding anything to contrary stated above, our liability under this guarantee will be restricted to Rs. --- ----- and shall remain in force up to -----, unless a demand or claim under this guarantee is made from the date i.e. on or before-----all your rights under the said guarantee shall be forfeited and we shall be released and discharged from all liabilities there under.

Dated at ----- day of -----

Seal of the Bank



एच॰ई॰सी॰

ISO 9001:2000

**HEAVY MACHINE BUILDING PLANT
HEAVY ENGINEERING CORPORATION LIMITED**

(A Govt. of India Enterprise)
Ranchi – 834 004 (INDIA)

Annexure D

Instructions for Online Bid Submission

The bidders are required to submit soft copies of their bids electronically on the CPP Portal, using valid Digital Signature Certificates. The instructions given below are meant to assist the bidders in registering on the CPP Portal, prepare their bids in accordance with the requirements and submitting their bids online on the CPP Portal.

*More information useful for submitting online bids on the CPP Portal may be obtained at:
<https://eprocure.gov.in/eprocure/app>.*

REGISTRATION

- (i) Bidders are required to enroll on the e-Procurement module of the Central Public Procurement Portal (URL: <https://etenders.gov.in/eprocure/app>) by clicking on the link "Online bidder Enrollment" on the CPP Portal which is free of charge.
- (ii) As part of the enrolment process, the bidders will be required to choose a unique username and assign a password for their accounts.
- (iii) Bidders are advised to register their valid email address and mobile numbers as part of the registration process. These would be used for any communication from the CPP Portal.
- (iv) Upon enrolment, the bidders will be required to register their valid Digital Signature Certificate (Class II or Class III Certificates with signing key usage) issued by any Certifying Authority recognized by CCA India (e.g. Sify / nCode / eMudhra etc.), with their profile.
- (v) Only one valid DSC should be registered by a bidder. Please note that the bidders are responsible to *ensure that they do not lend their DSC's to others which may lead to misuse.*
- (vi) Bidder then logs in to the site through the secured log-in by entering their user ID / password and the password of the DSC / e-Token.

SEARCHING FOR TENDER DOCUMENTS

- i) There are various search options built in the CPP Portal, to facilitate bidders to search active tenders by several parameters. These parameters could include Tender ID, Organization Name, Location, Date, Value, etc. There is also an option of advanced search for tenders, wherein the bidders may combine a number of search parameters such as Organization Name, Form of Contract, Location, Date, Other keywords etc. to search for a tender published on the CPP Portal.
- ii) Once the bidders have selected the tenders they are interested in, they may download the required documents / tender schedules. These tenders can be moved to the respective 'My Tenders' folder. This would enable the CPP Portal to intimate the bidders through SMS / e-mail in case there is any corrigendum issued to the tender document.
- iii) The bidder should make a note of the unique Tender ID assigned to each tender, in case they want to obtain any clarification / help from the Helpdesk.



एच॰ई॰सी॰

ISO 9001:2000

**HEAVY MACHINE BUILDING PLANT
HEAVY ENGINEERING CORPORATION LIMITED**

(A Govt. of India Enterprise)
Ranchi – 834 004 (INDIA)

PREPARATION OF BIDS

- i) Bidder should take into account any corrigendum published on the tender document before submitting their bids.
- ii) Please go through the tender advertisement and the tender document carefully to understand the documents required to be submitted as part of the bid. Please note the number of covers in which the bid documents have to be submitted, the number of documents - including the names and content of *each of the document that need to be submitted. Any deviations from these may lead to rejection of the bid.*
- iii) Bidder, in advance, should get ready the bid documents to be submitted as indicated in the tender document / schedule and generally, they can be in PDF / XLS / RAR formats. Bid documents may be scanned with 100 dpi with black and white option which helps in reducing size of the scanned document.
- iv) To avoid the time and effort required in uploading the same set of standard documents which are required to be submitted as a part of every bid, a provision of uploading such standard documents (e.g. PAN card copy, annual reports, auditor certificates etc.) has been provided to the bidders. Bidders can use "My Space" or "Other Important Documents" area available to them to upload such documents. These documents may be directly submitted from the "My Space" area while submitting a bid, and need not be uploaded again and again. This will lead to a reduction in the time required for bid submission process.

Note: My Documents space is only a repository given to the Bidders to ease the uploading process. If Bidder has uploaded his Documents in My Documents space, this does not automatically ensure these Documents being part of Technical Bid.

SUBMISSION OF BIDS

- i) Bidder should log into the site well in advance for bid submission so that they can upload the bid in time i.e. on or before the bid submission time. Bidder will be responsible for any delay due to other issues.
- ii) The bidder has to digitally sign and upload the required bid documents one by one as indicated in the tender document.
- iii) Bidder has to select the payment option as "offline" to pay the tender fee / EMD as applicable and enter details of the instrument.
- iv) Bidder should prepare the EMD as per the instructions specified in the tender document. The original should be posted/couriered/given in person to the concerned official, latest by as specified in the tender documents. The details of the DD / any other accepted instrument, physically sent, should tally with the details available in the scanned copy and the data entered during bid submission time. Otherwise the uploaded bid will be rejected.
- v) Bidders are requested to note that they should necessarily submit their financial bids in the format provided and no other format is acceptable. If the price bid has been given as a standard BOQ format



एच०ई०सी०

ISO 9001:2000

**HEAVY MACHINE BUILDING PLANT
HEAVY ENGINEERING CORPORATION LIMITED**

(A Govt. of India Enterprise)

Ranchi – 834 004 (INDIA)

with the tender document, then the same is to be downloaded and to be filled by all the bidders. Bidders are required to download the BOQ file, open it and complete the white colored (unprotected) cells with their respective financial quotes and other details (such as name of the bidder). No other cells should be changed. Once the details have been completed, the bidder should save it and submit it online, without changing the filename. If the BOQ file is found to be modified by the bidder, the bid will be rejected.

- vi) The server time (which is displayed on the bidders' dashboard) will be considered as the standard time for referencing the deadlines for submission of the bids by the bidders, opening of bids etc. The bidders should follow this time during bid submission.
- vii) All the documents being submitted by the bidders would be encrypted using PKI encryption techniques to ensure the secrecy of the data. The data entered cannot be viewed by unauthorized persons until the time of bid opening. The confidentiality of the bids is maintained using the secured Socket Layer 128 bit encryption technology. Data storage encryption of sensitive fields is done. Any bid document that is uploaded to the server is subjected to symmetric encryption using a system generated symmetric key. Further this key is subjected to asymmetric encryption using buyers/bid openers public keys. Overall, the uploaded tender documents become readable only after the tender opening by the authorized bid openers.
- viii) The uploaded tender documents become readable only after the tender opening by the authorized bid openers.
- ix) Upon the successful and timely submission of bids (i.e. after Clicking "Freeze Bid Submission" in the portal), the portal will give a successful bid submission message & a bid summary will be displayed with the bid no. and the date & time of submission of the bid with all other relevant details.
- x) The bid summary has to be printed and kept as an acknowledgement of the submission of the bid. This acknowledgement may be used as an entry pass for any bid opening meetings.

ASSISTANCE TO BIDDERS

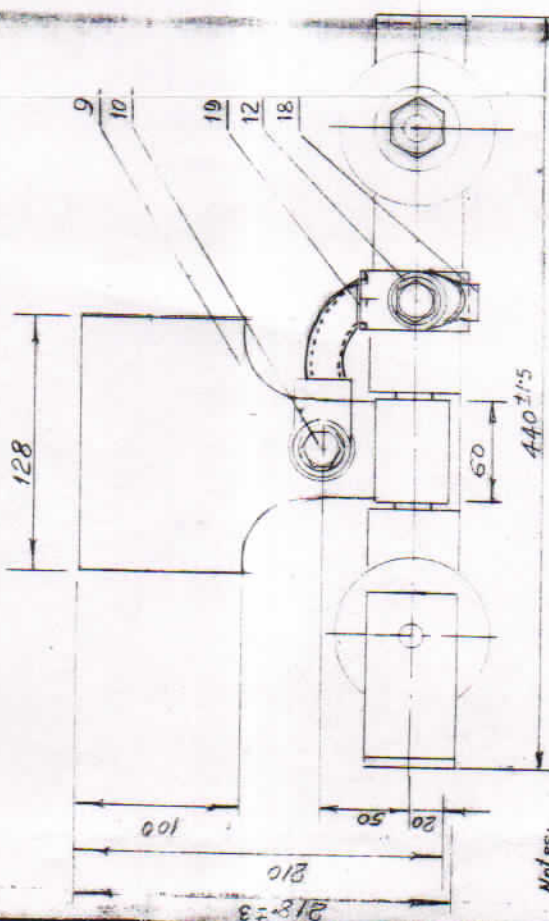
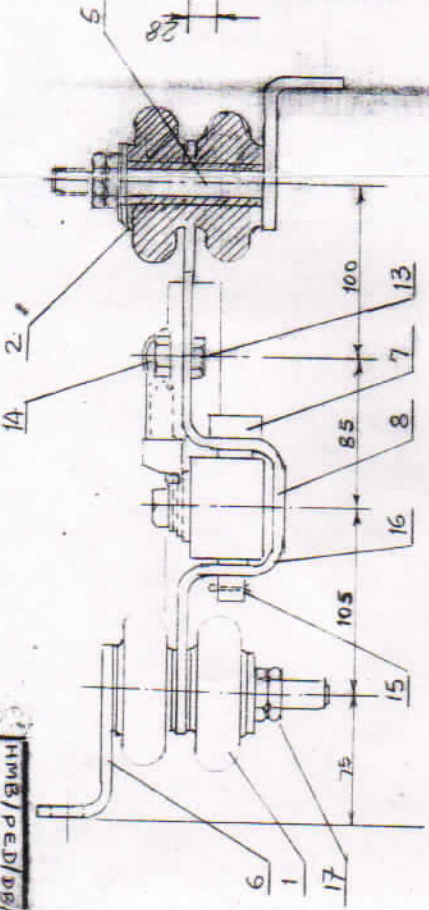
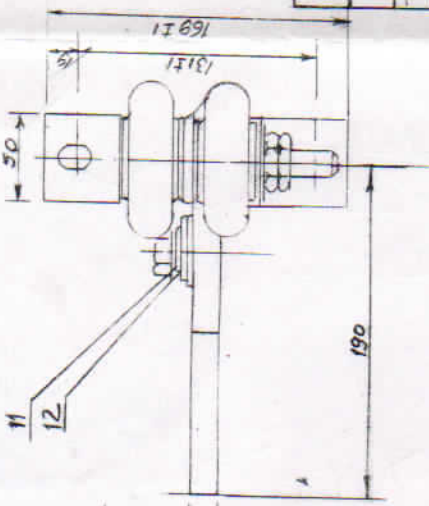
- i) Any queries relating to the tender document and the terms and conditions contained therein should be addressed to the Tender Inviting Authority for a tender or the relevant contact person indicated in the tender.
- ii) Any queries relating to the process of online bid submission or queries relating to CPP Portal in general may be directed to the 24x7 **CPP Portal** Helpdesk.
Note: For any query related to registration and processing on the Portal please visit FAQ available at <https://etenders.gov.in/eprocure/app?page=FAQFrontEnd&service=page>
You may call the Helpdesk. The 24 x 7 Help Desk Numbers are
0120-4200462, 0120-4001002, 0120-4001005, 0120-6277787
E-Mail: support-eproc@nic.in

Or

You may call to our service provider, Mr.Kushal (7903884318)

E-Mail: kushalniccl@gmail.com

15



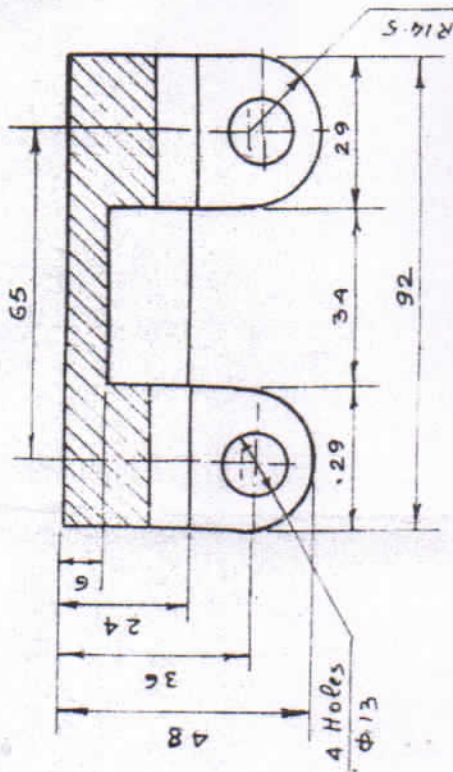
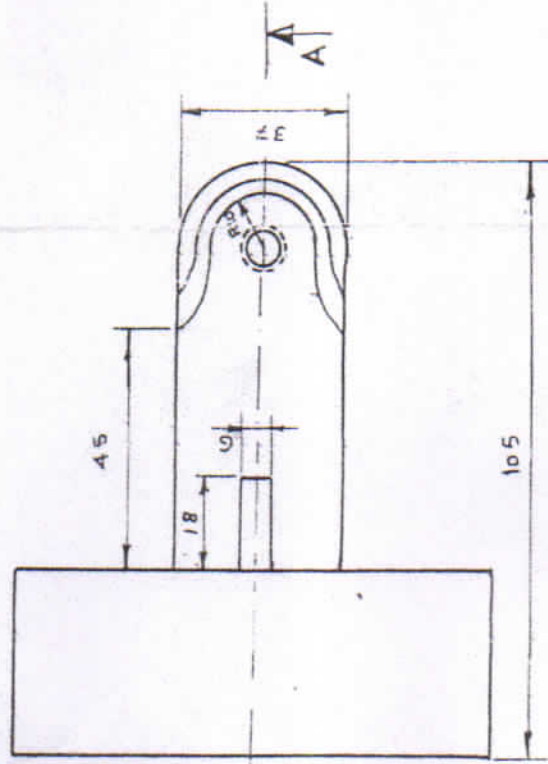
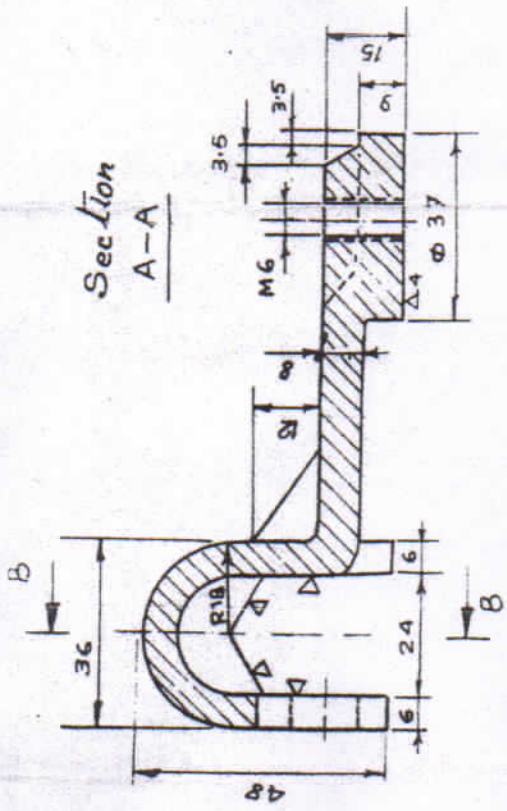
- Notes:
1. The assembled unit should withstand a voltage of 2KV, 50HZ. between shoe (item No 9) and stud. Assembly (item No. 6) for one minute.
 2. The clearance between Punched washer (item No 8) and shoe (item No 9) should not exceed 0.5mm.
 3. Lubricate pin (item No 7) with grease before installing the shoe.
 4. Lubricate the contact surface of shoe (item No 9) with grease.
 5. Cable lug (item No 18) are to be soldered to cable (item No 19).

Item No.	Material	Description	No. Off	Per plus Total Weight in Kg.	Remarks
19	Welding cable 6mm ² L=250, 15-264-64	Cable	1		Copper
18	Cable lug 13E 85-91-30	Cable lug	3		Material off.
17	Hex Nut M16	Hex Nut	4		SP. 4
16	Punched washer M16	Punched washer	2		PS-1088-300
15	Split pin 4x22	Split pin	1		MS
14	Hex nut M12	Hex nut	1		PS-1088-300H
13	Hex screw M12x30	Hex screw	1		PS-1088-300H
12	Punched washer M12	Punched washer	2		PS-1088-300
11	Spring washer 12	Spring washer	2		Steel
10	Hex screw M12x20	Hex screw	1		Brass
9	Shoe - 300A	Shoe	1		Steel
8	Clamp, 150L 416 X 50 X 6	Clamp	1		15-222-63
7	Pin Φ16-L=108	Pin	1		MILD STEEL
6	Stud Assembly	Stud Assembly	2		Alloy
5	Insulating washer 45x2	Insulating washer	4		Aluminum Base Insulating washer by 45x2
4	Insulating washer 15 2030-182	Insulating washer	4		15 2030-182
3	Washer 45x16	Washer	2		15-222-63
2	Insulating tube Assy	Insulating tube Assy	2		ASSY
1	Insulator	Insulator	2		Porcelain
Item No.	Description			Material	Material off.

Item No.	1	2	3	4	5	6	7	8	9	10	11	12	13	14	15	16	17	18	19
Drwg. No.	HMB/PED/DB/MSSC - 872																		
Description	Crab current collector 300A, 500V. Indoor gravity type																		
Weight in Kg.	Weight in Kg. 10.88																		
Head of Dept.	POWER ENGG. DEPT																		
Business Chief	R.M. SIVARAJA																		
Group Leader	P. K. ...																		
Designer T. by	...																		
Norm. Cont.	...																		
Ref. Drwg. No.	...																		
Scale:	1:1																		
Material	HMB/PED/DB/MSSC - 872																		
Per plus Total Weight in Kg.	11/90																		
Remarks	...																		

HMB/PED/DB/MSSC - 872

Index No.	Revision	Signature	Date

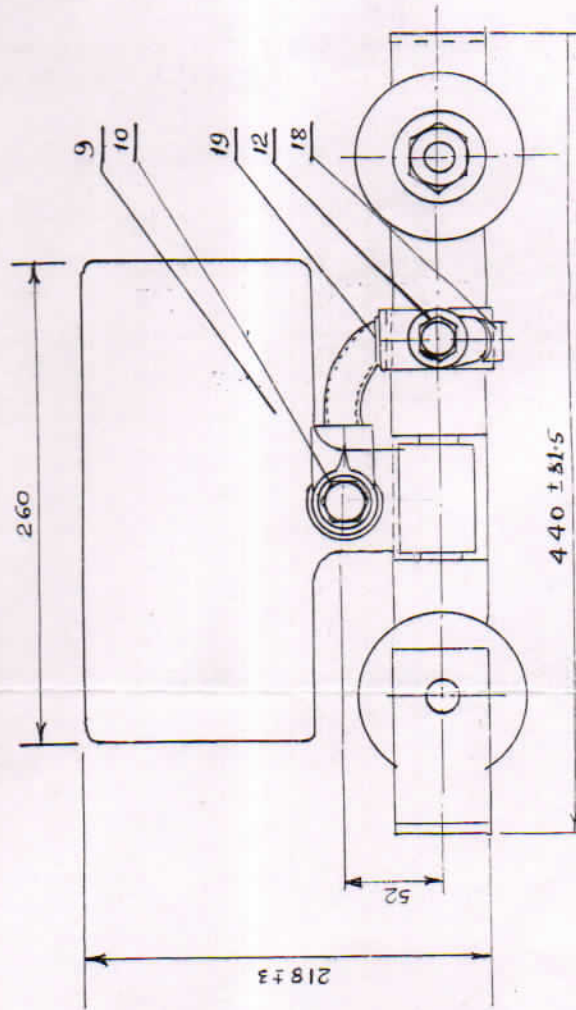
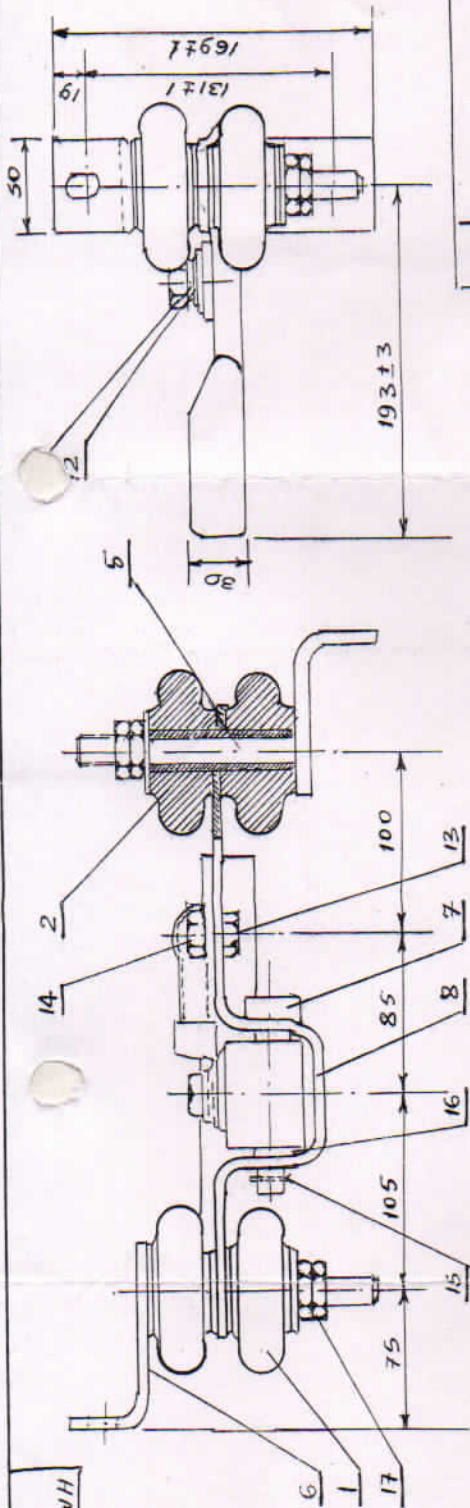


The following operations have to be carried out.

1. 4 Holes dia 13 as shown to be drilled. ↑ A
2. Surfaces marked ∇ to be machined to the minimum extent to remove burrs due to sand casting etc, and make surface uniform.
3. Drilling and tapping of one hole to M6 or M10.

BRASS CURRENT COLLECTOR		HMB/PED/78/M1	
FOR E.O.T. CRANE		245	
Scale: 1:1		Material: BRASS	
Bureau Chief	R. Narain	POWER ENGG DEPT	HMB
Group Leader	S.N. Gupta	REC. LTD. RANCHI	
Designer	P. Kumar	HMB/PED/78/Misc-245	
Drawn by			
Norm Cont.			

HMB/PEP/DB/DB/ - 873



Item No	Description	Material	No. off.
19	Welding cable 50 mm ² L = 250 To 260 + 64	Copper	1
18	Cable lug ISE 65: 91-30	Tinned copper	3
17	Hex nut M 16	SF-4	4
16	Punched washer M16	PS-088-800-1	2
15	Split pin 4x22	PS-088-800	1
14	Hex nut M12	M.S.	1
13	Hex screw M12x30	PS-088-800-1	1
12	Punched washer M12	PS-088-800	2
11	Spring washer 12	Spring Steel	2
10	Hex screw M12 x 20	Brass	1
9	Shoe 300A	Cast Iron	1
8	Clamp ISPL 426X50X6	SF-425	1
7	Pin φ16, L=106	Mild Steel	1
6	Stud assembly	ASSY	2
5	Insulating washer φ45 x 2	Phen. Bdg. Insulating washer φ45 x 2	4
4	Insulating washer φ45 x 2	PS-088-800-1	4
3	Washer φ45 x 16	SF-425	2
2	Insulating tube assy	ASSY	2
1	Insulator	Porcelain	4

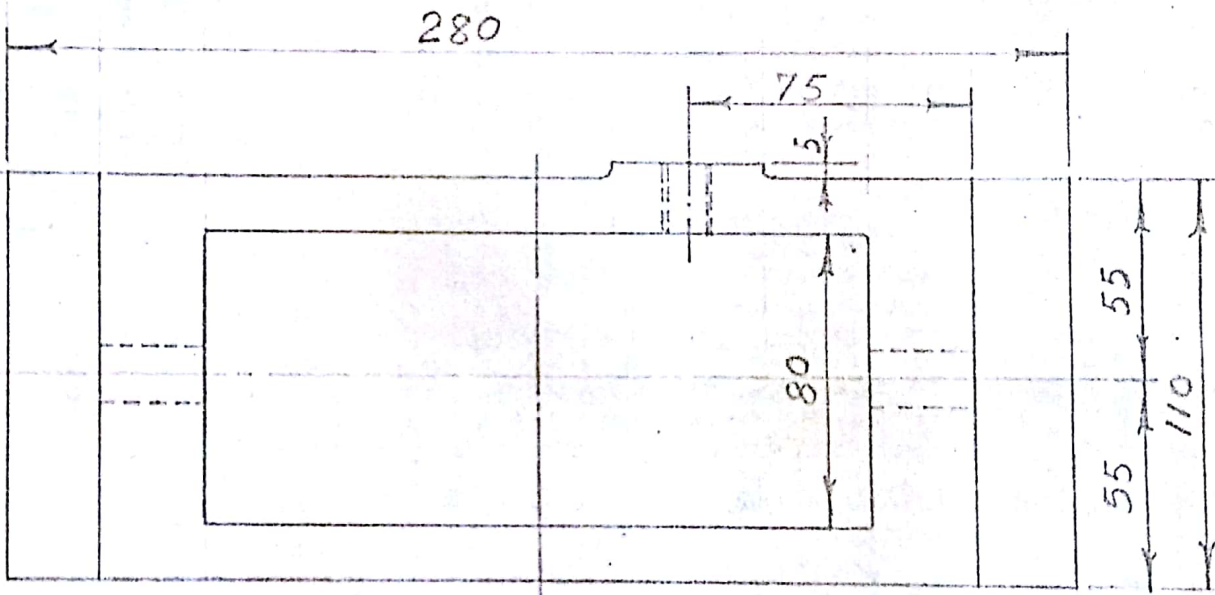
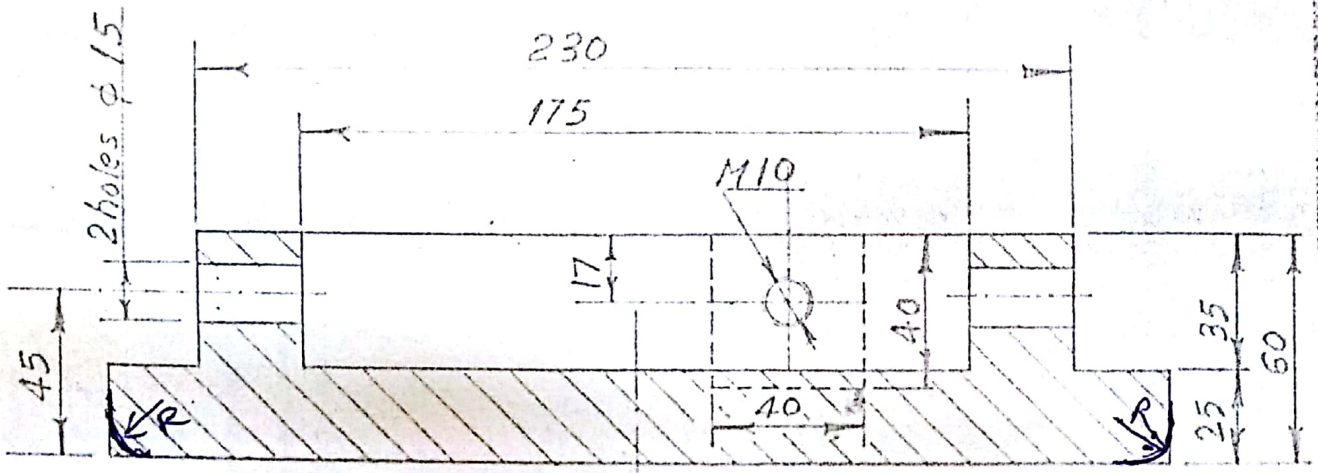
Notes:-
 1. The assembled unit should withstand a voltage of 2KV.50HZ. between shoe (item no.9) and stud assembly (item no.6) for one minute.
 2. The clearance between punched washer (item no.18) and shoe (item no.9) should not exceed 0.5mm.
 3. Lubricate pin (item no.7) with grease before installing the shoe.
 4. Lubricate the contact surface of shoe (item no.9) with grease.
 5. Cable lugs (item no.18) are to be soldered to cable (item no.19)

Current collector
 300A, 500V outdoor gravity type

HMB/PEP/DB/DB/ -
 MISC - 873

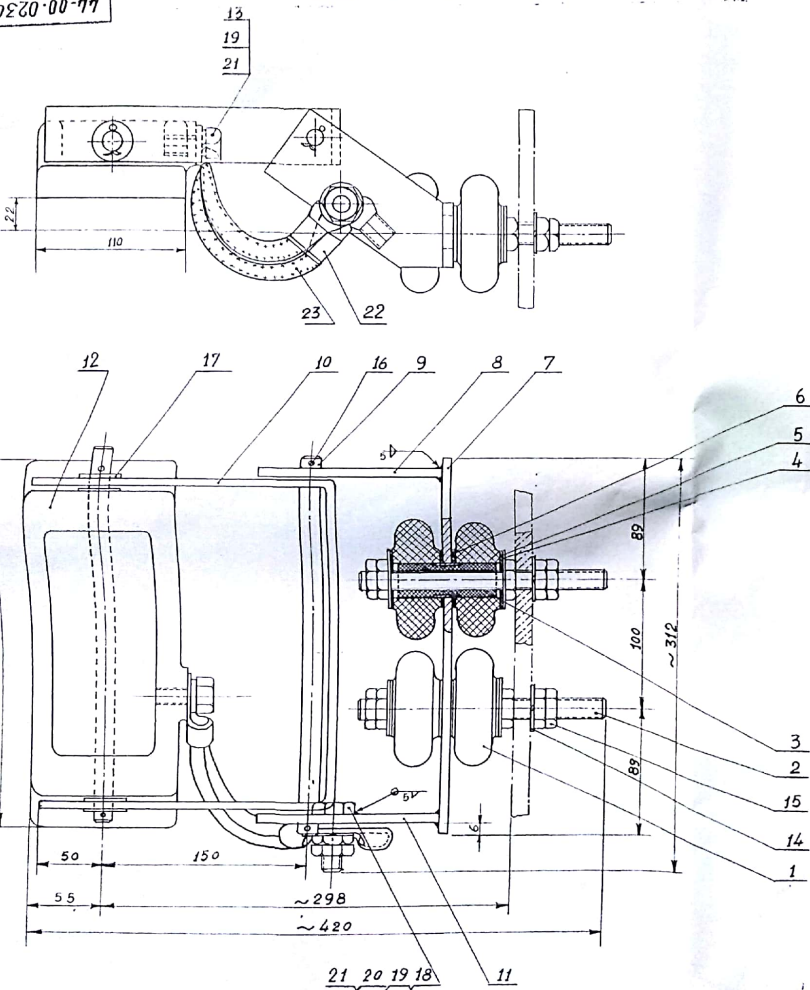
Scale: 1:1	Weight in Kg.
Bureau Chief	POWER ENGG. DEPT
Designed By	R.M. Srivastava
Trace By	P. K. Jaur.
Norm. chkd.	11/90
Ref. drawing No.	11/90
HMB	
HEC. LTD. RANCHI	

HMB/PED/DB/MISC/869



Current Collector Indoor Type		HMB/PED/DB/MISC/869	
		Material : C.I.	
Bureau Chief		Scale : 1:2	Weight in Kg. 1
Group Leader	RNPS	PED HMB H. E. O. LTD., RANCHI	
Designer			
Drawn by	R.C.S	Aug-90	
Ref. Dwg No.	Norm. Cont.		

0230-00-117



Notes:-

1. The collector is for indoor installation on 500v. ac or dc mains. It is not to be used in humid and dusty atmospheres.
2. The vertical centre lines of current collector shoe and trolleyline section should be within 20mm.
3. The welded assembly of item no-7,8,11 is to be galvanized to a thickness of 20 microns.
4. Cable lugs (item no-22) are to be soldered to cable (item no-23).
5. The assembled unit should withstand a voltage of 2kv, 50Hz between shoe (item no-12) and stud (item no-2) for one minute.
6. Weights of item nos 1 to 23 are approximate.

Item No.	Qty.	Description	Material	No. of Pcs	Weight in kgs.	Remarks
23	-	Welding cable 50mm ² L=250, IS-2641-64	Copper	2	0.2	0.4
22	-	Cable lug ISL, BS-91-30	Tinned Copper	5	0.46	0.3
21	-	Punched washer M12	SF 40 15-226-62	2	0.006	0.012
20	-	Hex nut M12	SF 40 15-226-62	2	0.017	0.034
19	-	Spring washer 12	SPRING STEEL	2	0.003	0.006
18	-	Hex screw M12 x 4.5	SF 40 15-226-62	1	0.05	0.05
17	-	Punched washer M16	SF 40 15-226-62	4	0.044	0.056
16	-	Split pin 4 x 22	HS	4	0.005	0.012
15	-	Hex nut M16	SF 40 15-226-62	10	0.033	0.33
14	-	Spring washer 16	SPRING STEEL	2	0.006	0.012
13	44-3200-16	Hex screw M12 x 20	BRASS	1	0.03	0.03
12	44-3200-15	Shoe	CS	1	7.5	7.5
11	44-3200-13	6 x 60 x 14.9	SF 42.5 15-226-62	1	0.38	0.38
10	44-3200-12	6 x 40 x 6.9	"	1	1.24	1.24
9	44-3200-11	PLN φ14, L=2.86	"	2	0.35	0.7
8	44-3200-10	6 x 60 x 14.9	"	1	0.38	0.38
7	44-3200-09	6 x 50 x 2.78	"	1	0.65	0.65
6	4400-0231	Insulating washer φ45x2	INSULATING WASHER	4	0.01	0.04
5	44-00-0232	Insulating Washer φ45x2	"	4	0.016	0.064
4	44-3200-06	Washer φ45 x 1.0	SF 42.5 15-226-62	4	0.03	0.12
3	44-00-0233	Insulating tube Assy	ASSY	2	0.64	1.28
2	44-3200-03	Stud M16, L=180	SF 42.5 15-226-62	2	0.28	0.56
1	44-3200-02	Insulator	Porcelain	4	0.31	1.24

CURRENT COLLECTOR 300-500A - 500V.
 [For indoor use]
 Weight in kg: 14.22

Head of Dept. _____
 Design Chief _____
 Design Engineer _____
 Design Clerk _____
 Ref. Des. No. _____

Scale: 1:2
 HMB
 H.E.C. LTD. RANCHI
 Aug '74

Rev. No.	Revision	Signature	Date